

Pick-Off Tee / Resistive Tap 30 dB SMA Female from DC to 8 GHz

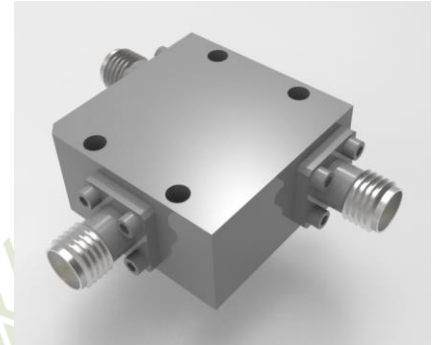
## Pick Off Tees / Resistive Taps Technical Data Sheet

**PT30-8**

### Description

Pick Off Tees, also known as Resistive Taps, are unique in that they allow coupling of a signal over a very flat, wide bandwidth, and can be used in much smaller configurations than stripline couplers. These non-directional devices are a cost-effective solution when monitoring is required.

The PT30-8 is part of Werbel Microwave's catalog of Pick-Off Tees. The device offers flat, 30-dB tapping over the bandwidth DC to 8 GHz. Compact enclosure available with SMA female connectors.



Specification	Min	Typ.	Max	Units
Frequency	DC*		8	GHz
Impedance		50		Ohm
Coupling		30		dB
Frequency Sensitivity		± 2.0		dB
Insertion Loss Measured at Highest Frequency		0.7	1.0	dB
Main Line VSWR		1.18	1.50	:1
Input Power (CW) into 1.2:1 max load VSWR			0.5	Watts

### Mechanical

Connector Interface	SMA-Female
Operating Temperature*	-55 to +85 °C
Storage Temperature	-55 to +100 °C
Weight	0.8 oz (23 g)
Humidity	10-90% non-condensing
Environment	Indoors Use Only

### Materials

#### RoHS and REACH Compliant

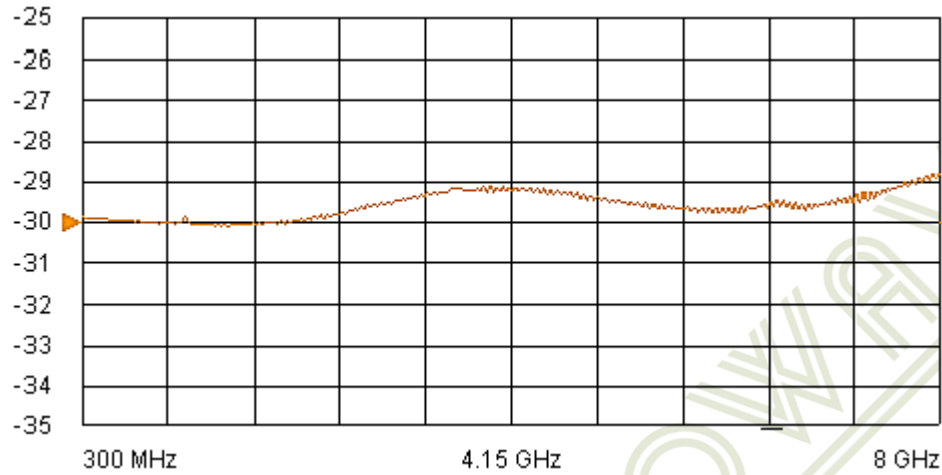
Enclosure	Aluminum
Connectors	Stainless Steel
Contacts	Be Cu, Gold Plated
Insulators	PTFE
Finish	Gray

\* Design to meet based on materials. Production-tested at +25 °C. External heatsink and convection cooling recommended to maintain body temperature below +50 °C. Measured from < 10 kHz.

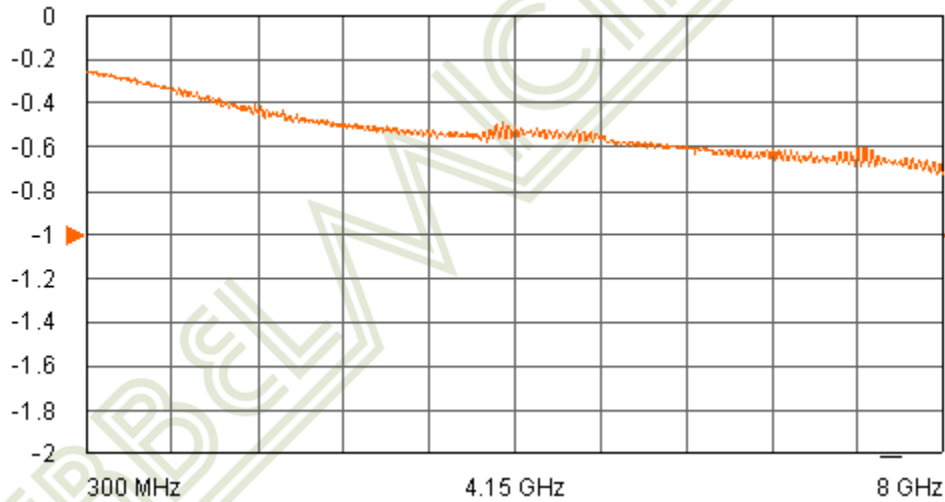


## Typical Performance at +25 °C

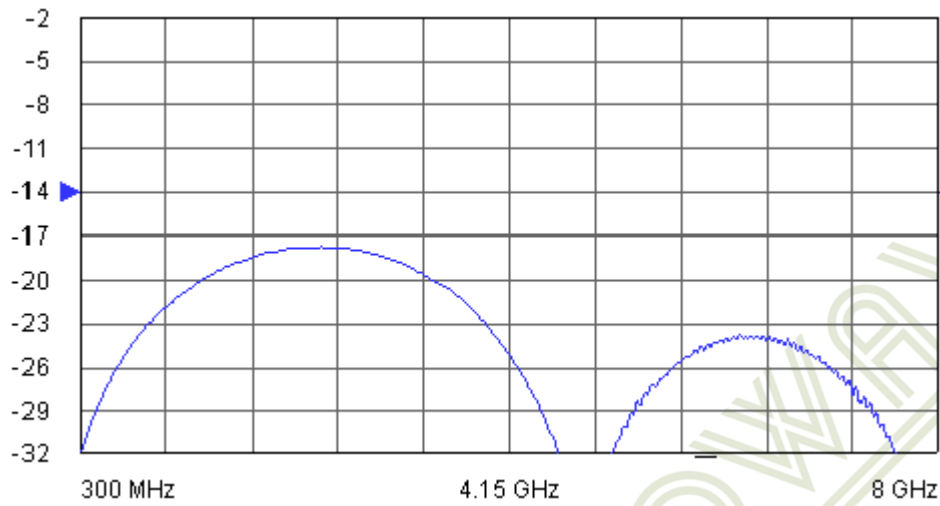
### Coupling Value and Flatness



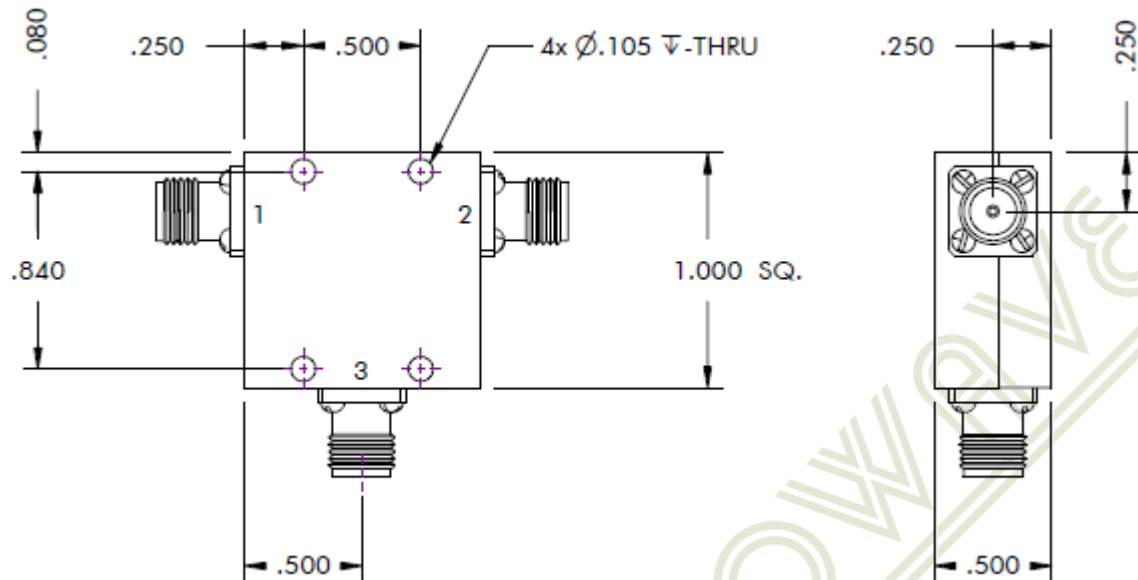
### Insertion Loss



## Return Loss



## Outline Dimensions



Outline # OL-1030

Dimensions are in inches, [mm] shown for convenience.

Tolerances on 2-pl decimals:  $\pm .03$ . 3-pl decimals:  $\pm .015$ .

The information contained in this document is accurate to the best of our knowledge and representative of the part described herein. It may be necessary to make modifications to the part and/or documentation of the part, in order to implement improvements. Werbel Microwave LLC reserves the right to make such changes as required without notice. Unless otherwise stated, all specifications and dimensions are nominal. Werbel Microwave does not make any representation or warranty regarding the suitability of the part described herein for any particular purpose, and Werbel Microwave LLC does not assume any liability arising out of the use of any part of documentation. This document gives only a description of the product(s) and shall not form part of any contract. Please contact a Werbel Microwave LLC Applications Engineer for the most current specification drawing.