

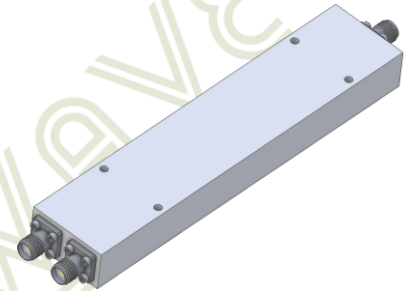
Ultra-Wideband Power Divider 2-way SMA Female from 500 MHz to 18 GHz

2-way SMA Power Divider from 500 MHz to 18 GHz

D-2185

Description

Model D-2185 from Werbel Microwave is a wideband 2-way in-line power splitter covering the continuous bandwidth of 500 MHz to 18 GHz in a compact enclosure measuring 4.75 x 1.00 x 0.50 inches. The device is RoHS compliant.



Specification	Min	Typ.	Max	Units
Frequency	0.5		18	GHz
Impedance		50		Ohm
VSWR (common port)			1.8	:1
VSWR (split ports)			1.8	:1
Insertion Loss (above theoretical at 5 GHz)			1.0	dB
Insertion Loss (above theoretical at 10 GHz)			1.2	dB
Insertion Loss (above theoretical at 15 GHz)			1.6	dB
Insertion Loss (above theoretical at 18 GHz)			1.9	dB
Isolation	12			dB
Isolation	14			
Amplitude Balance			0.9	dB
Phase Balance			10	Degrees
Power Handling as Splitter into 1.2:1 max load VSWR			20	Watts (CW)

Mechanical

Connector Interface	SMA-Female
Operating Temperature*	-55 to +85 °C
Storage Temperature	-55 to +100 °C
Weight Estimate	3.7 oz (105 g)
Humidity	10-90% non-condensing

Materials

RoHS Compliant

Enclosure	Aluminum
Connectors	Stainless Steel
Contacts	Be Cu, Gold Plated
Insulators	PTFE
Finish	Gray

* Design to meet based on materials. Production-tested at +25 °C. External heatsink and convection cooling recommended to maintain body temperature below +50 °C.



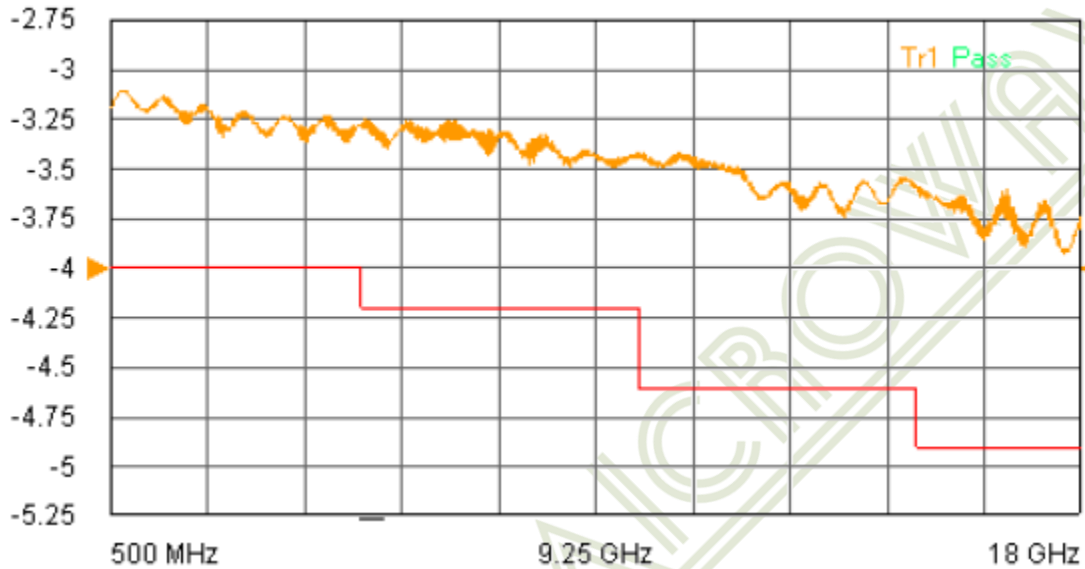
MADE IN USA

ISO 9001:2015

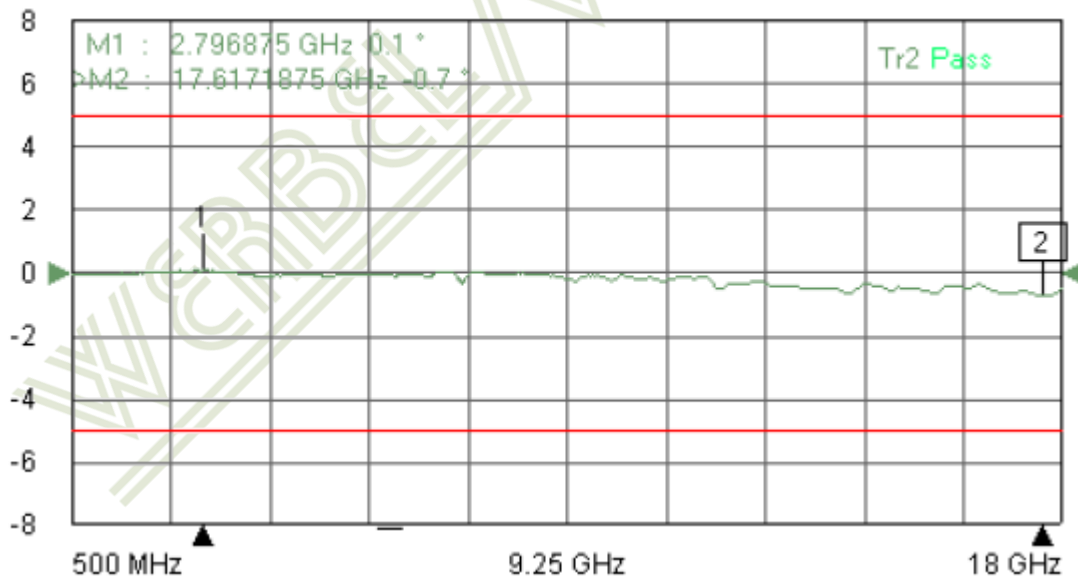
Certified Company

Typical Performance at +25 °C

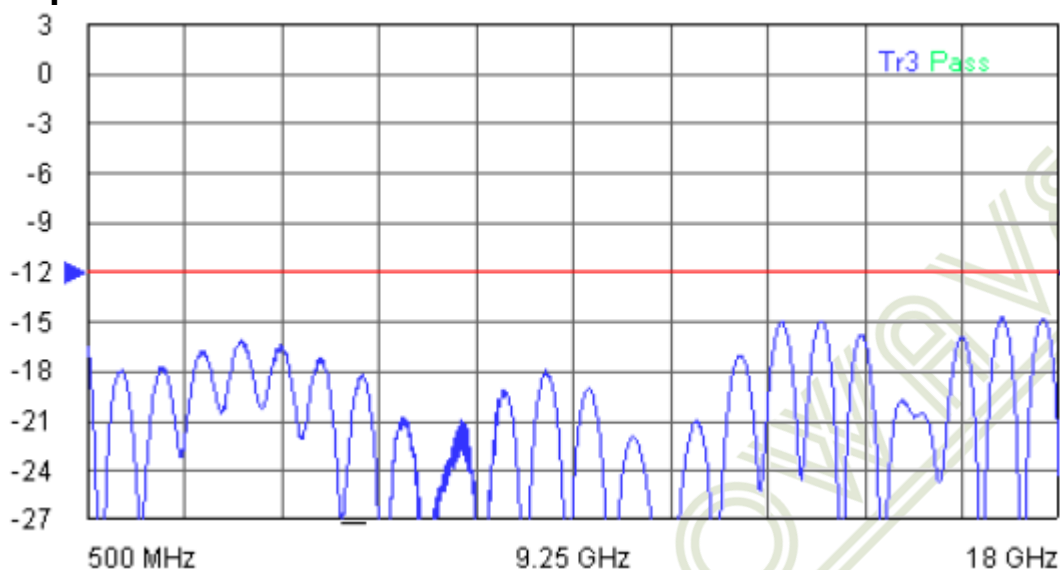
Insertion Loss



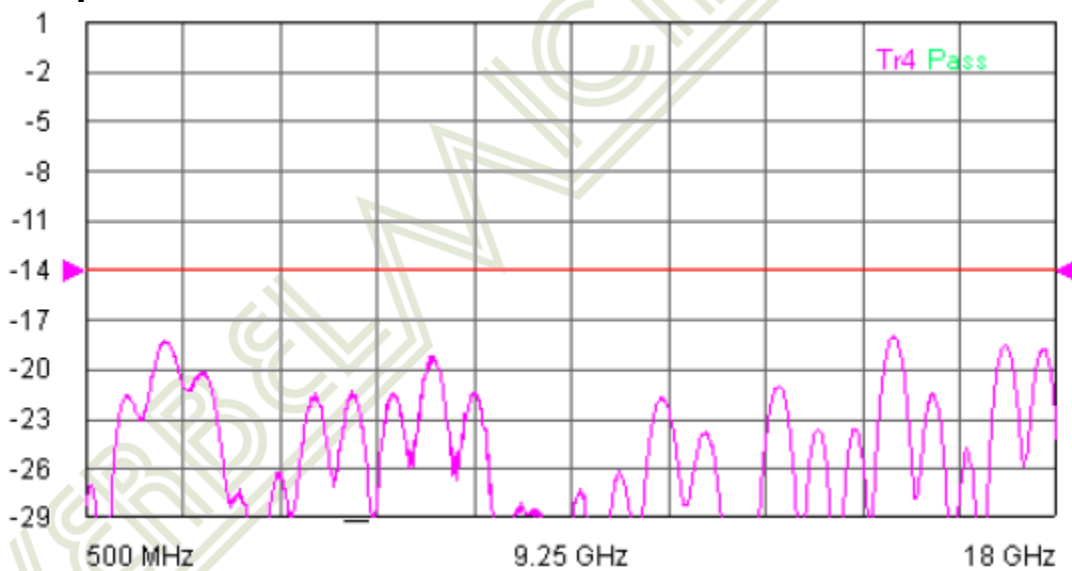
Phase



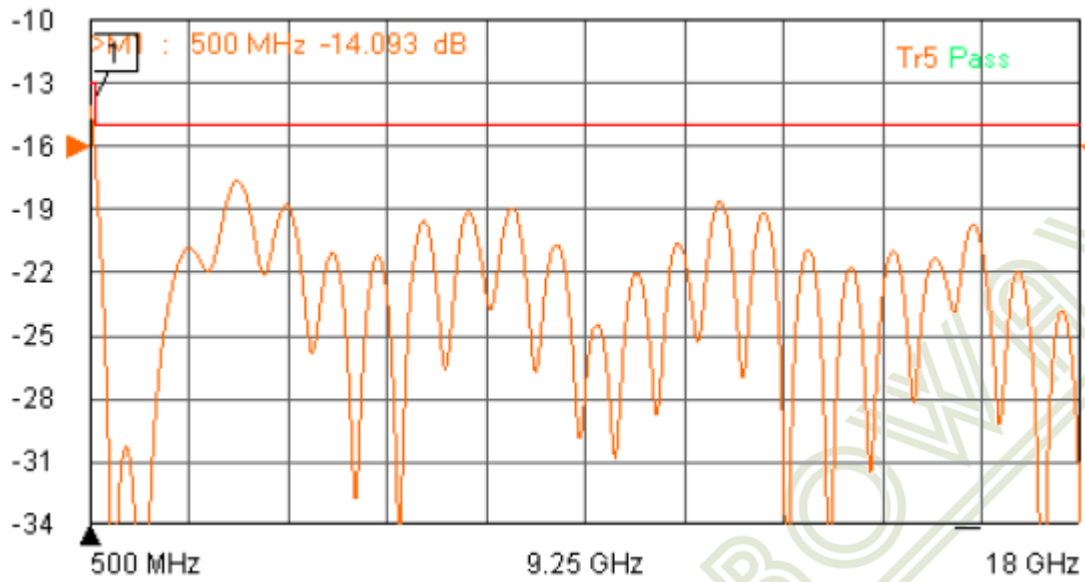
Return Loss Input



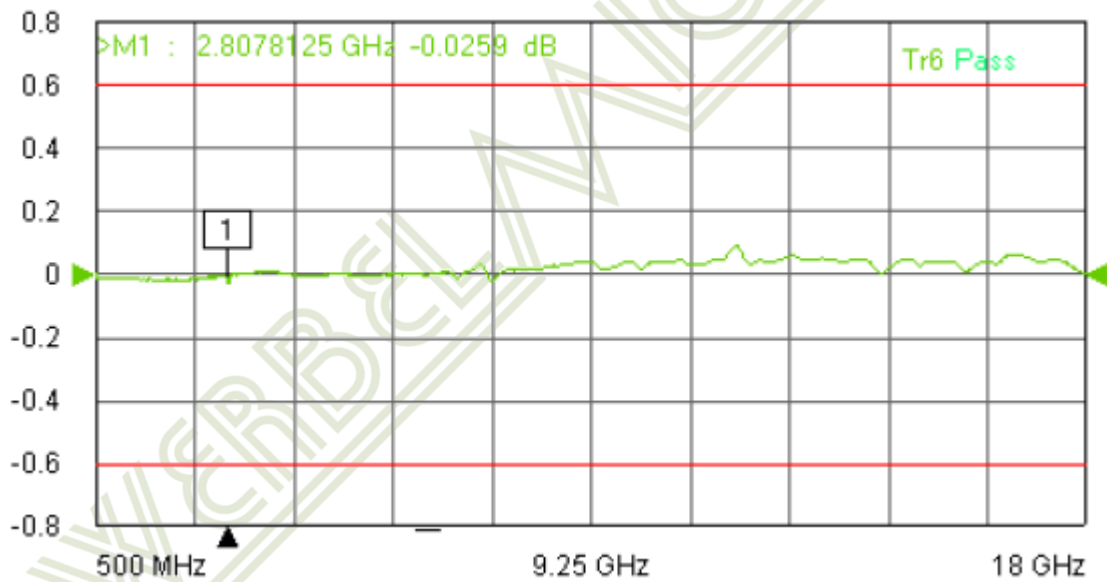
Return Loss Output



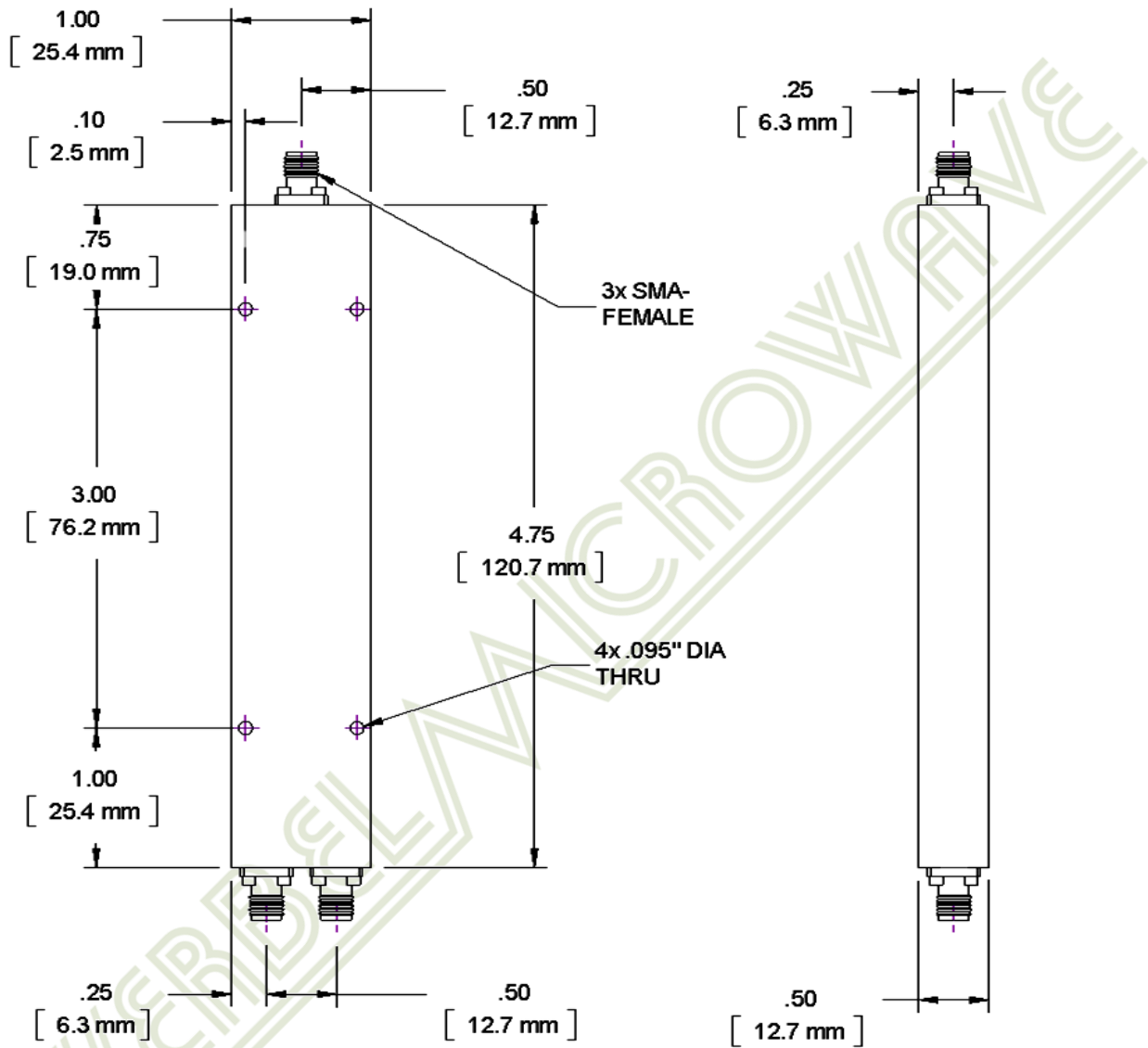
Isolation



Amplitude Balance



Outline Dimensions



Outline drawing: OL-2185

Dimensions are in inches, [mm] shown for convenience.

Tolerances on 2-pl decimals: $\pm .03$. 3-pl decimals: $\pm .015$.

The information contained in this document is accurate to the best of our knowledge and representative of the part described herein. It may be necessary to make modifications to the part and/or documentation of the part, in order to implement improvements. Werbel Microwave LLC reserves the right to make such changes as required without notice. Unless otherwise stated, all specifications and dimensions are nominal. Werbel Microwave does not make any representation or warranty regarding the suitability of the part described herein for any particular purpose, and Werbel Microwave LLC does not assume any liability arising out of the use of any part of documentation. This document gives only a description of the product(s) and shall not form part of any contract. Please contact a Werbel Microwave LLC Applications Engineer for the most current specification drawing.