

SMA Directional Coupler 10 dB from 1 GHz to 20 GHz

Directional Couplers Technical Data Sheet

C-1201-10

Description

Model C-1201-10 from Werbel Microwave is a directional coupler that covers 1 GHz to 20 GHz with broadband flat coupling response, high directivity, and excellent return loss performance.



Photo is representative.

Specifications	Min.	Typ.	Max.	Units
Frequency	1,000		20,000	MHz
Impedance		50		Ohm
Coupling		10 ± 1.5		dB
Frequency Sensitivity (Flatness)		±0.6	±1.8	dB
Mainline Loss ¹		1.45	1.90	dB
Directivity	10	14		dB
Return Loss (In and Out)	11	15		dB
Return Loss (Coupled)	10	15		dB
Input Power (CW) ²			20	Watts

Mechanical

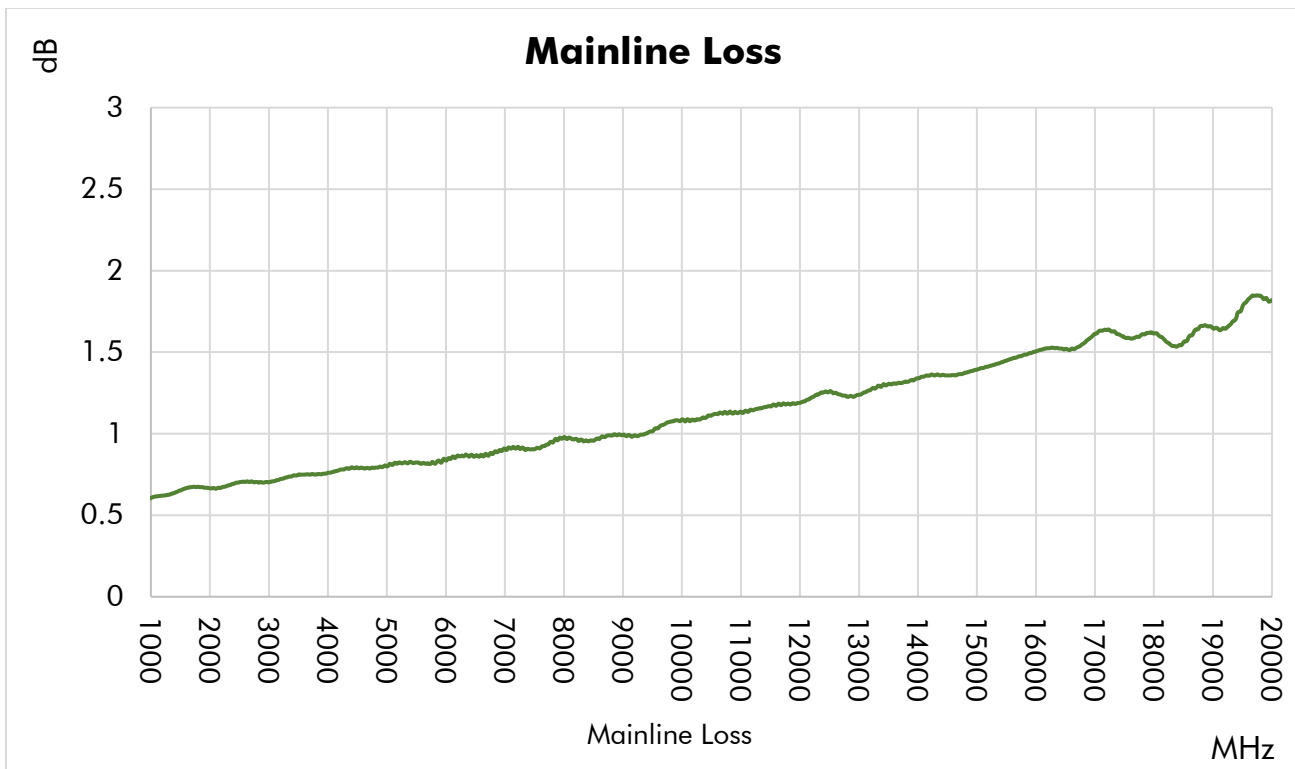
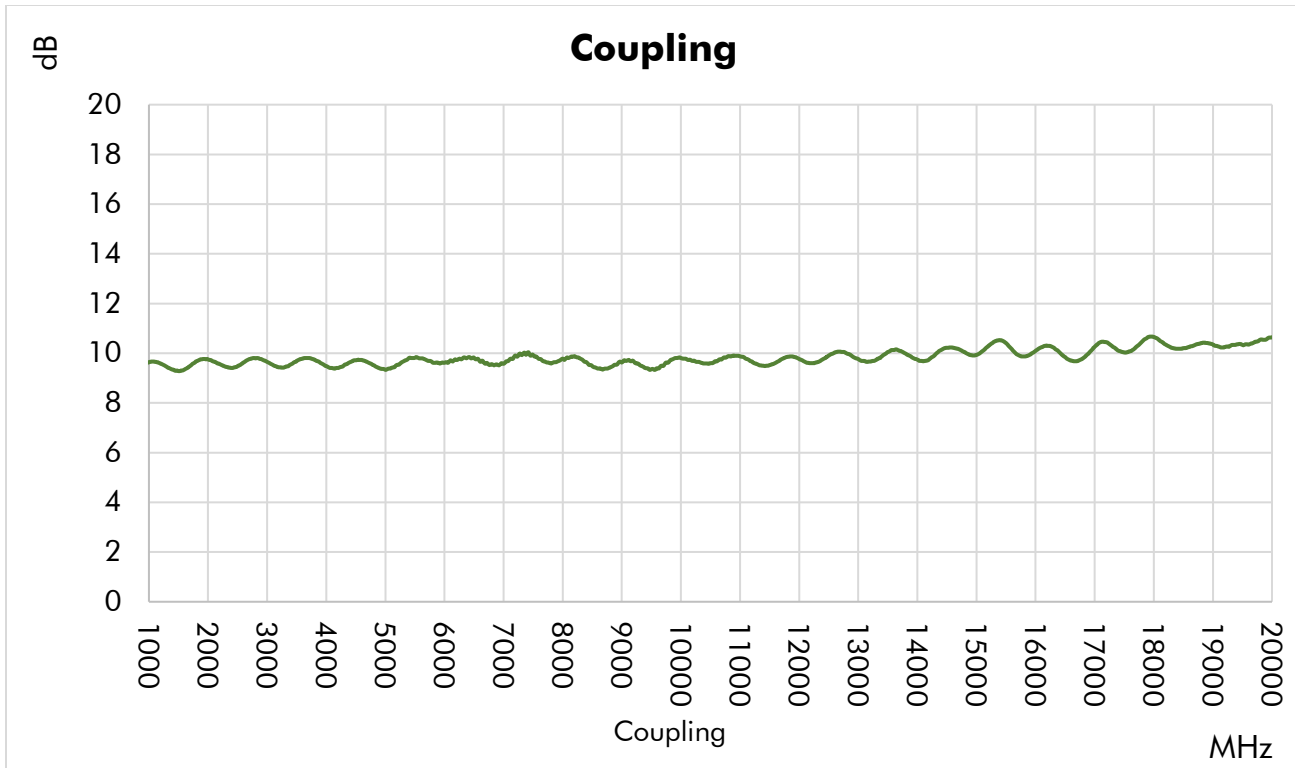
Connector Interface	SMA-Female
Operating Temperature ³	-55 to +85 °C
Storage Temperature	-55 to +100 °C
Weight	3.5 oz (86 g)
Humidity	10-90% non-condensing
Environment	Indoors Use Only

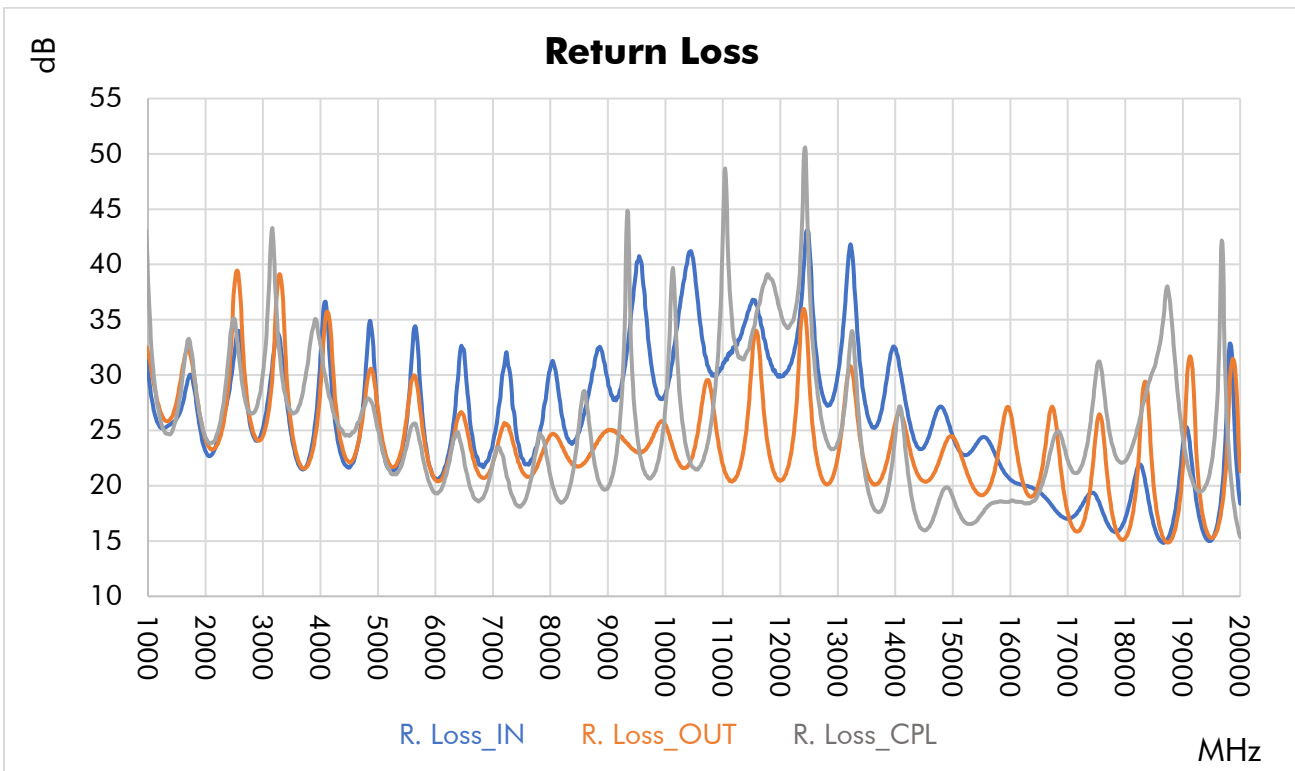
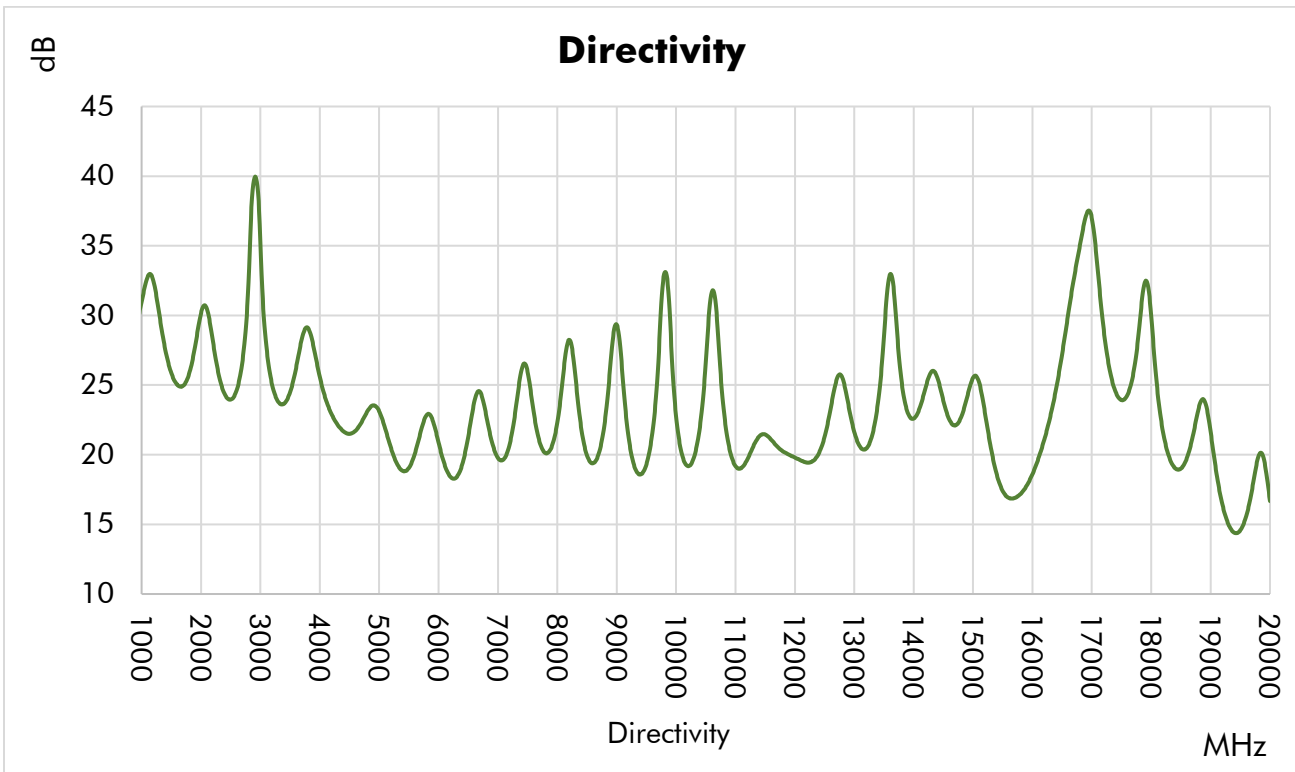
Materials

RoHS and REACH Compliant ⁴	
Enclosure	Aluminum
Connectors	Stainless Steel
Contacts	Be Cu, Gold Plated
Insulators	PTFE
Finish	Gray Paint

1. Mainline loss includes coupling loss.
2. All output ports should be terminated in a 50-ohm load with 1.2:1 max VSWR.
3. Electrical specifications at +25 °C only.
4. To the best of our knowledge at the time of publication.

Typical Performance at +25 °C

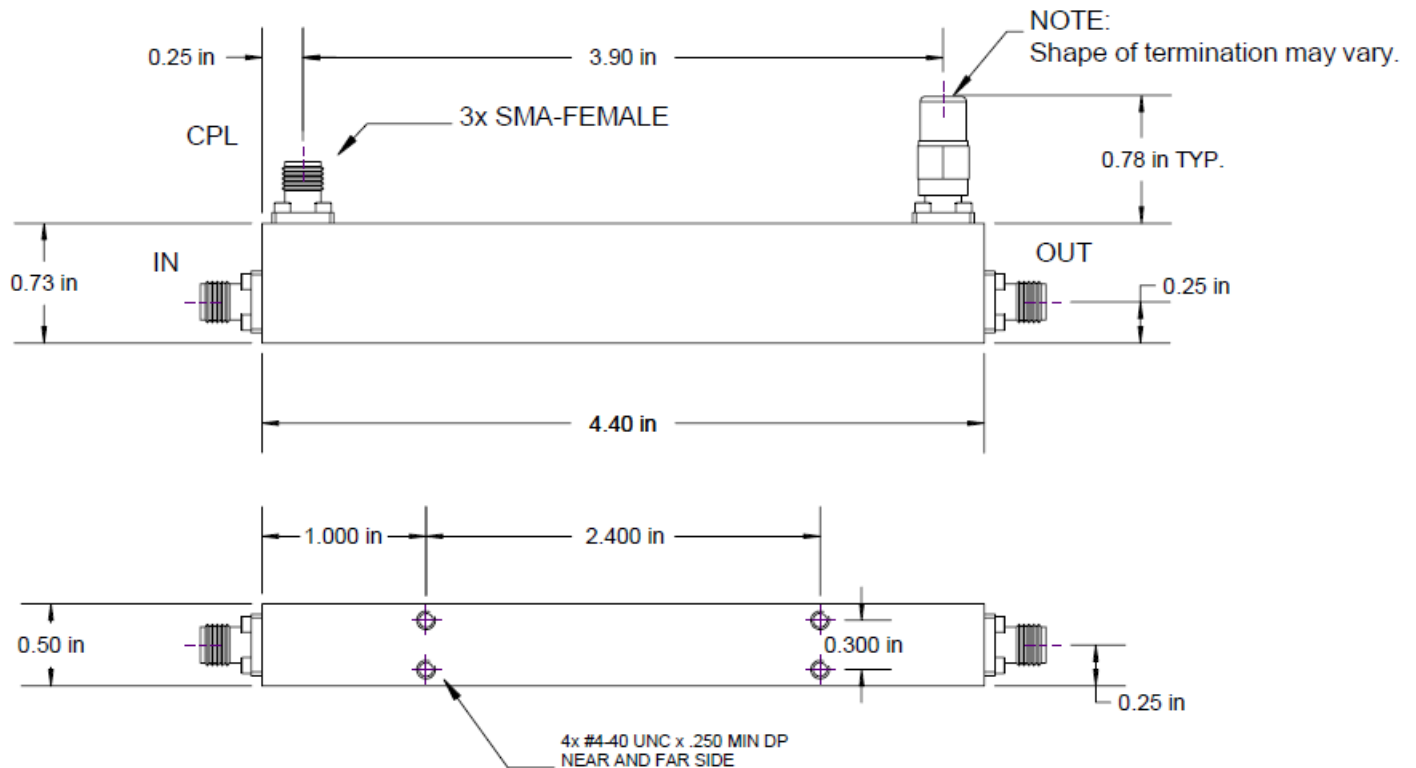




Typical Performance Data

Frequency (MHz)	Return Loss (dB)			Mainline Loss (dB)		Coupling (dB)	Directivity (dB)
	In	Out	Cpl.	In-Out	In-Cpl.		
1000	28.4	30.0	36.4	0.6	9.7	32.8	
1500	26.7	29.5	27.1	0.7	9.2	25.0	
2000	22.7	23.3	24.2	0.7	9.7	31.2	
2500	33.8	40.0	34.4	0.7	9.6	24.3	
3000	26.6	25.9	31.4	0.7	9.6	28.0	
3500	23.0	22.9	26.6	0.8	9.8	25.8	
4000	36.1	34.4	32.0	0.8	9.5	24.1	
4500	21.6	22.2	24.4	0.7	9.7	21.6	
5000	24.3	24.0	24.7	0.8	9.3	22.1	
5500	28.0	29.0	24.1	0.8	9.8	19.8	
6000	20.9	20.5	19.2	0.8	9.6	19.4	
6500	28.5	23.6	21.3	1.0	9.9	23.6	
7000	25.2	23.6	22.8	0.8	9.5	19.5	
7500	22.4	20.9	18.4	1.0	9.9	23.4	
8000	32.3	25.2	20.2	1.1	9.9	24.9	
8500	25.8	21.8	26.8	0.9	9.5	19.2	
9000	27.6	24.3	20.0	1.0	9.3	26.2	
9500	43.3	23.7	24.0	1.2	9.6	20.8	
10000	28.9	24.3	28.6	1.0	9.8	20.0	
10500	37.5	24.9	21.5	1.2	9.7	33.1	
11000	32.8	21.1	49.1	1.0	9.8	18.9	
11500	37.6	37.0	34.0	1.3	9.5	21.2	
12000	29.5	20.4	35.4	1.2	9.7	19.6	
12500	36.9	24.1	36.0	1.3	10.0	22.8	
13000	32.0	25.4	24.3	1.3	9.8	20.6	
13500	25.4	20.1	19.7	1.3	10.1	34.8	
14000	31.7	27.2	25.9	1.4	9.7	23.0	
14500	23.9	20.4	15.9	1.3	10.2	22.6	
15000	23.7	23.9	18.6	1.4	10.0	25.8	
15500	24.4	19.3	17.6	1.5	10.3	16.9	
16000	20.4	24.3	18.7	1.5	10.1	19.5	
16500	19.3	22.1	19.7	1.6	9.8	29.6	
17000	17.1	16.2	21.9	1.6	10.3	34.0	
17500	18.3	27.7	31.3	1.5	10.0	24.0	
18000	17.8	15.9	22.4	1.6	10.7	25.1	
18500	15.5	16.7	30.9	1.7	10.2	19.5	
19000	26.0	28.3	23.7	1.6	10.3	19.0	
19500	15.5	15.5	22.9	2.1	10.4	15.3	
20000	16.7	17.2	15.0	1.9	10.7	14.0	

Outline Dimensions



Outline # OL-1185

Dimensions are in inches, [mm] shown for convenience.

Tolerances on 2-pl decimals: $\pm .03$. 3-pl decimals: $\pm .015$.

The information contained in this document is accurate to the best of our knowledge and representative of the part described herein. It may be necessary to make modifications to the part and/or documentation of the part, in order to implement improvements. Werbel Microwave LLC reserves the right to make such changes as required without notice. Unless otherwise stated, all specifications and dimensions are nominal. Werbel Microwave does not make any representation or warranty regarding the suitability of the part described herein for any particular purpose, and Werbel Microwave LLC does not assume any liability arising out of the use of any part of documentation. This document gives only a description of the product(s) and shall not form part of any contract. Please contact a Werbel Microwave LLC Applications Engineer for the most current specification drawing.